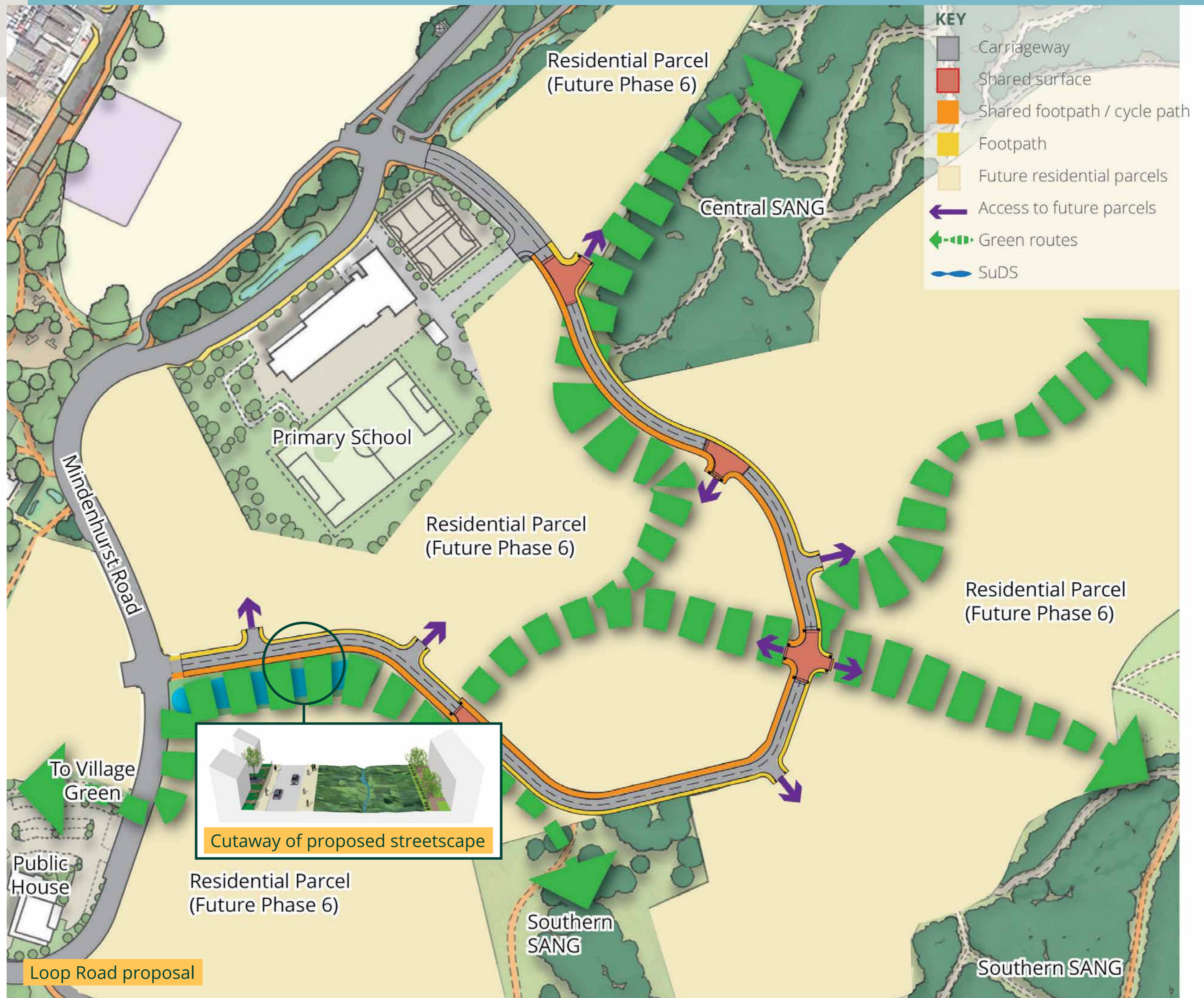


Loop Road

CREATED WITH CARE BY

SKANSKA



The new Loop Road will deliver:

- Access for vehicles, pedestrians and cyclists to the future residential areas
- New sustainable drainage along the western end of the loop road
- 3 new electricity substations to support new housing
- Safe access for cars, pedestrians and cyclists alike to move between residential and green spaces.

The loop road will provide access to future residential parcels. The road forms a loop from the east of the Mindenhurst Road and will connect to the section of road that has already been constructed adjacent to the Primary School site.

The road is intended to reflect a more residential character than Mindenhurst Road, meandering through the future residential phases of the development.

The road design encourages sustainable travel with a wide footpath on the eastern side and a shared pedestrian/cyclist path on the other.

A number of vehicle access points to the future residential parcels are proposed to ensure no more than 150 homes are served by a single access point, which is designed to avoid traffic congestion.

The road will be subject to a 20mph speed limit and is intended for access to the residential parcels by private vehicles. Direct access from properties to the loop road will be allowable where topography is suitable.

Raised tables in block paving are proposed in 4 locations along the road to assist with traffic calming, to facilitate pedestrian connectivity, and access to the wider network of pedestrian and cycle links and green infrastructure.